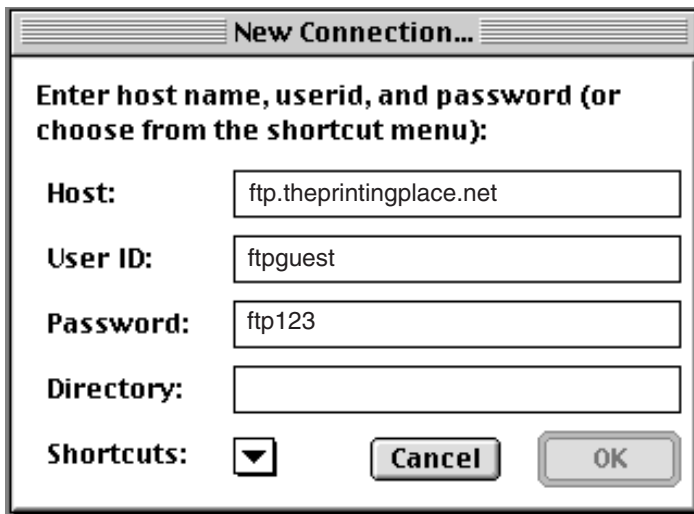




Submitting Files via FTP

- You will need an FTP client (a third party application, such as Fetch or Cute FTP)
- Please place all files into a folder and label it with a Printing Place Job # (Call The Printing Place for a Job #)
- Please compress the folder (.sit or .zip .hqx .sea for example)



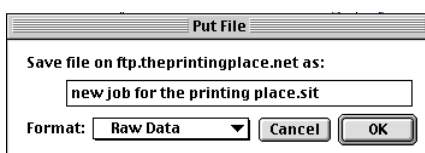
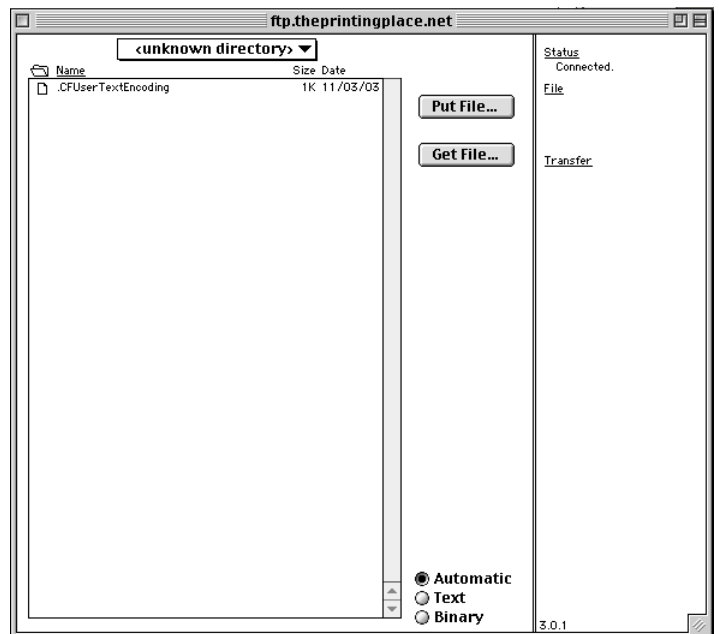
Go to File > New Connection

- enter Host: ftp.theprintingplace.net
- the User ID: ftpguest,
- the Password: ftp123,
- the Directory: <BLANK>,
- Connect by clicking OK.

FTP Client shown Fetch (other applications may be different)

Once you have connected you should see something similar to this. >

- click binary check box at bottom of window,
- click put file,
- find the compressed file with The Printing Place Job#,
- select raw data as the format type,
- click OK.



That's it, please call or email us letting us know you have posted a job to our FTP.
prepress@theprintingplace.net • Phone# 760.773-4701